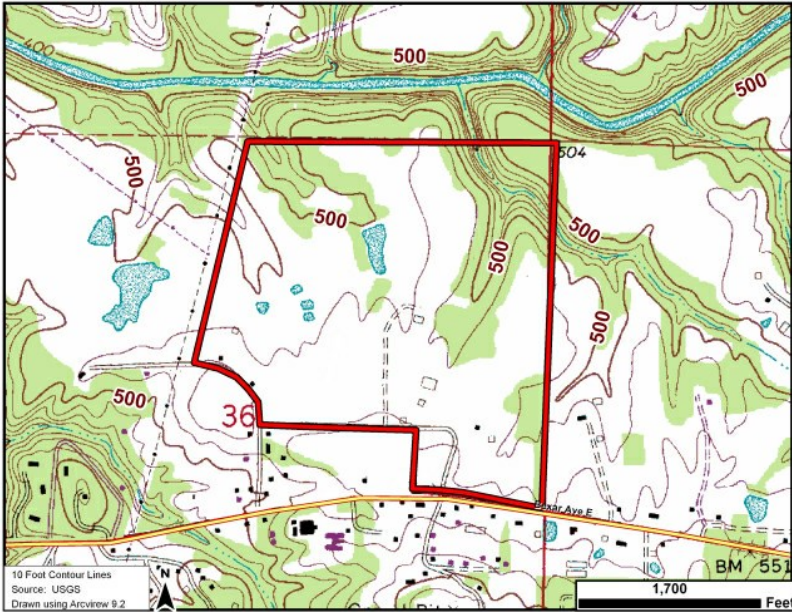




# AVAILABLE INDUSTRIAL SITE

## BEDFORD INDUSTRIAL PARK



Highway 278 East, Hamilton, Marion, AL, 35570

### Interstate/Highway

Interstate:

To Interstate (miles):

Interstate #2:

To Interstate #2 (miles):

Highway:

To Highway (miles):

### Rail

Carrier: BNSF

### Electric

Provider: Alabama Power Company

### Natural Gas

Provider: North Alabama Gas District

Pressure (bars): 200 Psi

Size of Main: 4"

### Water

Provider: Hamilton Water Works

Size of Main: 10"

### Telecommunications

Provider: CenturyLink

Fiber Available: Yes

DSL Available: Yes

### Sewer

Provider: Hamilton Water Works

Size of Main: 8"



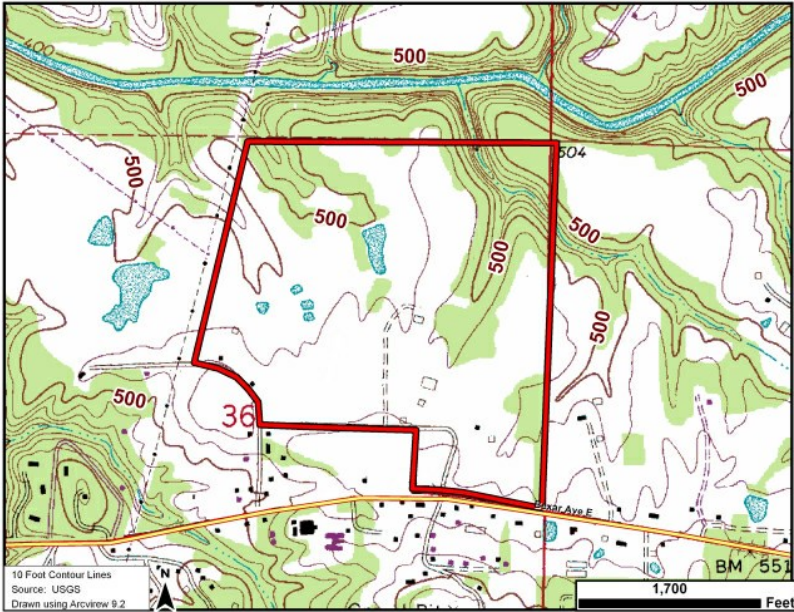
For more information, please contact:

C3 of Northwest Alabama Economic Development Alliance  
David Thornell  
(205) 468-3213  
dthornell@northwestalabamaeda.org

Economic Development Partnership of Alabama  
1320 1st Avenue South  
Birmingham, AL 35233  
P 205.943.4700  
gblalock@edpa.org  
<https://www.edpa.org>

# AVAILABLE INDUSTRIAL SITE

## BEDFORD INDUSTRIAL PARK



Highway 278 East, Hamilton, Marion, AL, 35570



For more information, please contact:

C3 of Northwest Alabama Economic  
Development Alliance  
David Thornell  
(205) 468-3213  
dthornell@northwestalabamaeda.org

Economic Development Partnership of  
Alabama  
1320 1st Avenue South  
Birmingham, AL 35233  
P 205.943.4700  
gblalock@edpa.org  
<https://www.edpa.org>