

AVAILABLE COMMERCIAL/OFFICE BUILDING

LAMAR HEALTHCARE CLINIC



49494 Highway 17 S, Sulligent, Lamar, AL, 35586

Sale / Lease

For Sale: Yes
Sale Price: \$ 600,000.00 Total
For Lease: No
Lease Price:
Pricing Information:

Building Details

of Floors: 1
Multi-Tenant: No
Prior Use: Full Service Medical Clinic
Sprinklered: No
Heated: Yes
Air Conditioning: Yes
Drive In Doors:
Eave Height Minimum: 0
Floor Thickness:
of Cranes:

Property Details

Latitude: 33.819723
Longitude: -88.115817
Total Square Footage: 14,924 sq. ft.
Available Square Footage: 14,924 sq. ft.
Available Office (sqft):
Building Expandable:
Expandable to (sqft):
Max. Contiguous Space: 14,924 sq. ft.
Total Acreage: 3 Acre(s)
Additional Acreage Available:

Zoning

Zoning: None

Description

Frame/Exterior walls-Brick veneer on wood frame EFIS on rear.Windows-fixed window,aluminum clad,insulated clear glass,glass block.Doors-front- glass,side- insulated glass aluminum clad,rear-metal aluminum clad,interior-solid veneer wood



For more information, please contact:

C3 of Northwest Alabama Economic Development Alliance
David Thornell
(205) 468-3213
dthornell@northwestalabamaeda.org

Economic Development Partnership of Alabama
1320 1st Avenue South
Birmingham, AL 35233
P 205.943.4700
gblalock@edpa.org
https://www.edpa.org

AVAILABLE COMMERCIAL/OFFICE BUILDING

LAMAR HEALTHCARE CLINIC



49494 Highway 17 S, Sulligent, Lamar, AL, 35586

Interstate/Highway

Interstate:
To Interstate (miles):
Interstate #2:
To Interstate #2 (miles):
Highway:
To Highway (miles):

Electric

Provider: Alabama Power Company

Natural Gas

Provider: Lamar County Gas

Water

Provider: Sulligent Water & Sewer Works

Telecommunications

Provider:
Fiber Available:

Sewer

Provider: Sulligent Water & Sewer Works



For more information, please contact:

**C3 of Northwest Alabama Economic
Development Alliance
David Thornell
(205) 468-3213
dthornell@northwestalabamaeda.org**

**Economic Development Partnership of
Alabama
1320 1st Avenue South
Birmingham, AL 35233
P 205.943.4700
gblalock@edpa.org
https://www.edpa.org**

AVAILABLE COMMERCIAL/OFFICE BUILDING

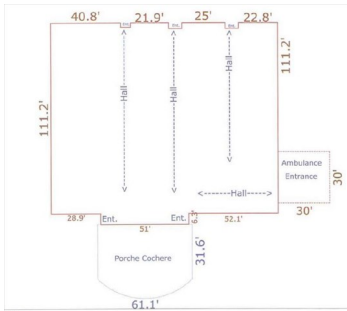
LAMAR HEALTHCARE CLINIC

WIN

 with Alabama

49494 Highway 17 S, Sulligent, Lamar, AL, 35586

EDPA

 Economic Development Partnership of Alabama

For more information, please contact:

C3 of Northwest Alabama Economic
Development Alliance
David Thornell
(205) 468-3213
dthornell@northwestalabamaeda.org

Economic Development Partnership of
Alabama
1320 1st Avenue South
Birmingham, AL 35233
P 205.943.4700
gblalock@edpa.org
<https://www.edpa.org>