

AVAILABLE INDUSTRIAL BUILDING

OMNI BUILDING



7712 US-278, Sulligent, Lamar, AL, 35586

Sale / Lease

For Sale: Yes
Sale Price: \$ 350,000.00 Total
For Lease: No
Lease Price:
Pricing Information:

Building Details

of Floors: 1
Multi-Tenant:
Prior Use: Wood furniture production
Sprinklered: No
Heated: Yes
Air Conditioning: No
Drive In Doors:
Eave Height Minimum: 14
Floor Thickness: 6"
of Cranes:

Property Details

Latitude: 33.912570
Longitude: -88.100640
Total Square Footage: 50,320 sq. ft.
Available Square Footage: 50,320 sq. ft.
Available Office (sqft): 630
Building Expandable: Yes
Expandable to (sqft): 100,000 sq. ft.
Max. Contiguous Space: 49,690 sq. ft.
Total Acreage: 6 Acre(s)
Additional Acreage Available:

Zoning

Zoning: Light Industry

Description

Contact David Thornell, C3 of Northwest Alabama, via email at dthornell@northwestalabamaeda.org or call 205-468-3213.



For more information, please contact:

C3 of Northwest Alabama Economic Development Alliance
David Thornell
(205) 468-3213
dthornell@northwestalabamaeda.org

Economic Development Partnership of Alabama
1320 1st Avenue South
Birmingham, AL 35233
P 205.943.4700
gblalock@edpa.org
<https://www.edpa.org>

AVAILABLE INDUSTRIAL BUILDING

OMNI BUILDING



7712 US-278, Sulligent, Lamar, AL, 35586

Interstate/Highway

Interstate: I-22
To Interstate (miles): 23 Mile(s)
Interstate #2:
To Interstate #2 (miles):
Highway:
To Highway (miles):

Electric

Provider: Alabama Power Company

Natural Gas

Provider: North Alabama Gas District

Water

Provider: City of Sulligent

Telecommunications

Provider: CenturyLink
Fiber Available:

Sewer

Provider: City of Sulligent



For more information, please contact:

**C3 of Northwest Alabama Economic
Development Alliance
David Thornell
(205) 468-3213
dthornell@northwestalabamaeda.org**

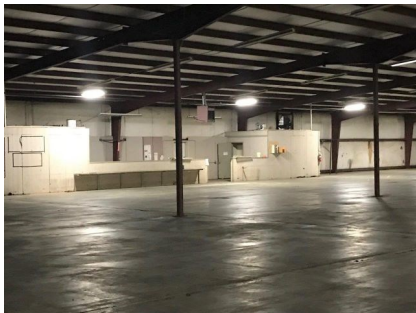
**Economic Development Partnership of
Alabama
1320 1st Avenue South
Birmingham, AL 35233
P 205.943.4700
gblalock@edpa.org
https://www.edpa.org**

AVAILABLE INDUSTRIAL BUILDING OMNI BUILDING

WIN with Alabama



7712 US-278, Sulligent, Lamar, AL, 35586



EDPA

Economic Development
Partnership of Alabama

For more information, please contact:

C3 of Northwest Alabama Economic
Development Alliance
David Thornell
(205) 468-3213
dthornell@northwestalabamaeda.org

Economic Development Partnership of
Alabama
1320 1st Avenue South
Birmingham, AL 35233
P 205.943.4700
gblalock@edpa.org
<https://www.edpa.org>