

# AVAILABLE INDUSTRIAL SITE

## TOWN OF BERRY INDUSTRIAL PARK



Highway 18 East, Berry, Fayette, AL, 35546

### Sale / Lease

**For Sale:** Yes  
**Sale Price:** \$ 3,000.00 per acre  
**Pricing Information:** Price can be reduced based on jobs and total capital investment.

### Zoning

**Zoning:** Light Industrial

### Property Details

**Latitude:** 33.644700  
**Longitude:** -87.621000  
**Total Acreage:** 40 Acre(s)  
**Available Acres:** 40 Acre(s)  
**Largest Tract Available:** 40 Acre(s)  
**Smallest Tract Available:** 40 Acre(s)  
**Expandable:** Yes  
**Wetlands:**  
**Phase 1 Audit Done:**

### Description

Additional 40 acres available to south of site. . Contact David Thornell email: [dthornell@northwestalabamaeda.org](mailto:dthornell@northwestalabamaeda.org) or call 205-468-3213



**For more information, please contact:**

**C3 of Northwest Alabama Economic Development Alliance**  
**David Thornell**  
**(205) 468-3213**  
[dthornell@northwestalabamaeda.org](mailto:dthornell@northwestalabamaeda.org)

**Economic Development Partnership of Alabama**  
**1320 1st Avenue South**  
**Birmingham, AL 35233**  
**P 205.943.4700**  
[gblalock@edpa.org](mailto:gblalock@edpa.org)  
<https://www.edpa.org>

# AVAILABLE INDUSTRIAL SITE

## TOWN OF BERRY INDUSTRIAL PARK



Highway 18 East, Berry, Fayette, AL, 35546

### Interstate/Highway

**Interstate:** I-20  
**To Interstate (miles):** 45 Mile(s)  
**Interstate #2:** I-65  
**To Interstate #2 (miles):** 55.00 Mile(s)  
**Highway:** 13  
**To Highway (miles):** 4.00 Mile(s)

### Rail

**Carrier:** Norfolk Southern

### Electric

**Provider:** Alabama Power Company

### Natural Gas

**Provider:** Berry Gas Board  
**Pressure (bars):**  
**Size of Main:** 2"

### Water

**Provider:** Berry Water & Sewer Board  
**Size of Main:** 8"

### Telecommunications

**Provider:** CenturyLink  
**Fiber Available:**  
**DSL Available:**

### Sewer

**Provider:** Berry Water & Sewer Board  
**Size of Main:**



**For more information, please contact:**

**C3 of Northwest Alabama Economic Development Alliance**  
**David Thornell**  
**(205) 468-3213**  
**dthornell@northwestalabamaeda.org**

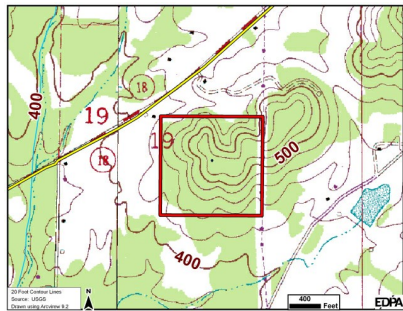
**Economic Development Partnership of Alabama**  
**1320 1st Avenue South**  
**Birmingham, AL 35233**  
**P 205.943.4700**  
**gblalock@edpa.org**  
**<https://www.edpa.org>**

# AVAILABLE INDUSTRIAL SITE

## TOWN OF BERRY INDUSTRIAL PARK



Highway 18 East, Berry, Fayette, AL, 35546



**For more information, please contact:**

**C3 of Northwest Alabama Economic  
Development Alliance  
David Thornell  
(205) 468-3213  
dthornell@northwestalabamaeda.org**

**Economic Development Partnership of  
Alabama  
1320 1st Avenue South  
Birmingham, AL 35233  
P 205.943.4700  
gblalock@edpa.org  
https://www.edpa.org**